



A REPORT ON HIRING ACTIVITY IN INDIA

By: City, Industry,
Functional Area
and Experience

NOVEMBER 2020

TABLE OF CONTENTS

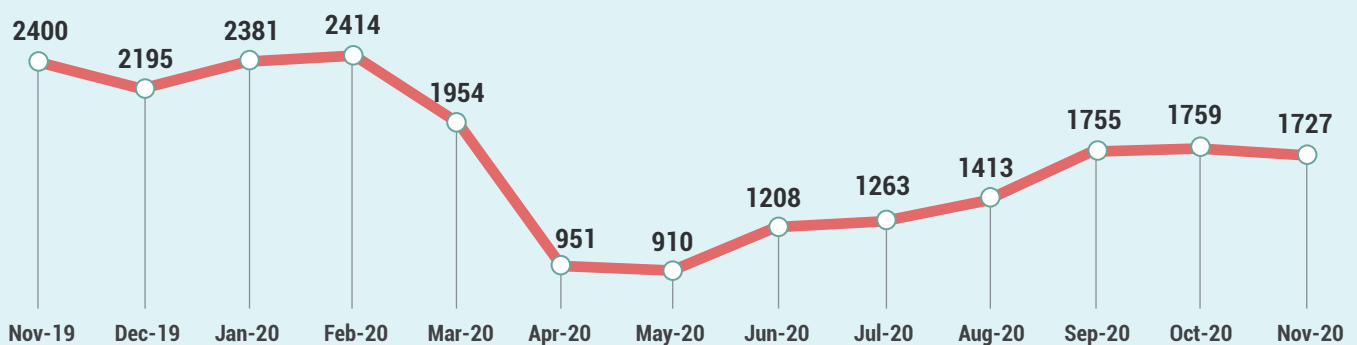
| | |
|--------------------------|------|
| Overview | 3 |
| Sectoral Analysis | 4 |
| Functional Area Analysis | 5 |
| City Analysis | 6 |
| Work Experience Analysis | 7 |
| Methodology | 8 |
| Annexure | 9-11 |



INDEX FOR NOVEMBER 2020

The Naukri JobSpeak Index for November'20, at 1727, remains flat (-2%) in hiring activity as compared to October'20, at 1759, on account of the festivities. The hiring index declined by 28% in November'20 Vs November'19.

Overall Hiring Trends



Pawan Goyal, Chief Business Officer, Naukri.com said,

"Nov'20 sees a decline in Y-O-Y hiring activity owing to the impact of the festive period. Key sectors such as IT and Medical/ Healthcare continue to grow during the pandemic. Over the last 6 months, we have seen a sequential lift in hiring activity and are hopeful that as organizations adjust to the new normal and focus on growth plans, this momentum will continue in the next quarter as well."

- Hospitality/Travel (-67%), Oil and Gas/Power/Infrastructure/Energy (-57%), Retail (-46%), Telecom/ISP (-40%), and Accounting/Taxation/Finance (-41%) sectors witnessed a steep decline in hiring activity in Nov'20 Y-O-Y.
- Mumbai (-40%), Delhi/NCR (-36%), and Kolkata (-35%) led the decline in hiring in metros.
- Recruitment across the board declined at varied experience levels with the entry-level experience bands (0 to 3 yrs exp) witnessing the sharpest decline of 36%.

HIRING TRENDS ACROSS KEY INDUSTRIES

- Key sectors such as Medical/Healthcare (-18%), Pharma/Biotech (-19%), IT-Software (-22%) and BPO/ITES (-26%) remained less impacted due to macro conditions that required intervention from these sectors.
- Hiring in Hospitality/Travel (-67%), Retail (-46%), Accounting/-Finance (-41%) and Insurance (-38%) sectors was most impacted at a Y-O-Y level in November'20.
- Industries such as FMCG (-31%), IT-Hardware (-29%) and Auto/Auto Ancillary (-36%) too are impacted negatively.



Insurance **-38%**



IT-Software **-22%**



BPO/ITES **-26%**



Pharma **-19%**



Auto & Ancillary **-36%**



Oil and Gas **-57%**



Hotels/Restaurant/
Travel/Airlines **-67%**



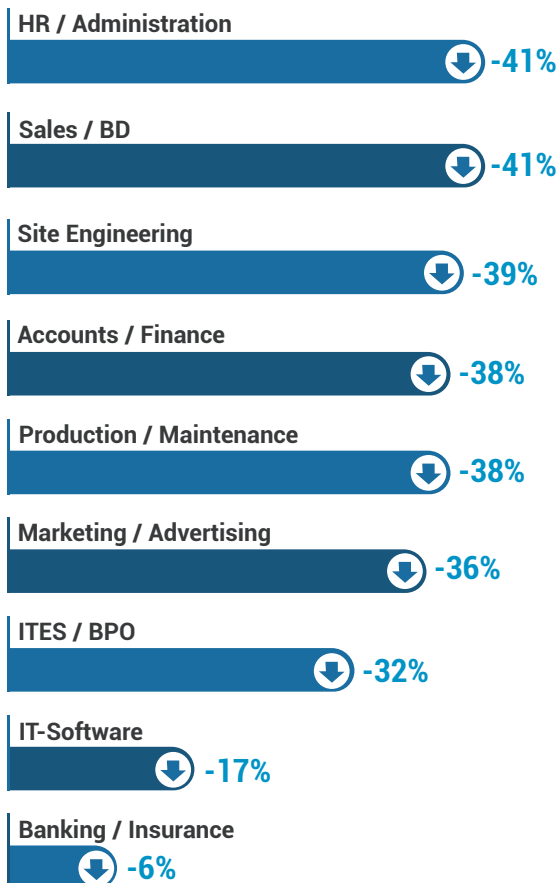
Banking **-38%**

Figures are percentage change in Nov-20 over average of Nov-19

| Industry* | Nov-19 | Dec-19 | Jan-20 | Feb-20 | Mar-20 | Apr-20 | May-20 | Jun-20 | Jul-20 | Aug-20 | Sep-20 | Oct-20 | Nov-20 |
|-------------------------------------|--------|--------|--------|--------|--------|--------|--------|--------|--------|--------|--------|--------|--------|
| IT-Software/Software Services | 3,578 | 3,133 | 3,353 | 3,525 | 3089 | 1803 | 1472 | 1755 | 1749 | 1986 | 2375 | 2533 | 2779 |
| BPO/ITES/CRM/Transcription | 2,421 | 2,120 | 2,279 | 2,259 | 2140 | 929 | 839 | 1244 | 1315 | 1527 | 1971 | 1878 | 1791 |
| Construction/Engineering/Cement | 973 | 862 | 952 | 906 | 633 | 216 | 282 | 374 | 475 | 490 | 583 | 583 | 555 |
| Auto/Auto Ancillary | 1,285 | 1,151 | 1,276 | 1,330 | 915 | 265 | 327 | 580 | 661 | 771 | 994 | 985 | 820 |
| Banking/Financial Services/Broking | 2,848 | 2,701 | 3,062 | 2,946 | 2465 | 993 | 858 | 1192 | 1378 | 1437 | 1910 | 1832 | 1772 |
| Oil and Gas/Power/Infrastructure/ | 774 | 712 | 820 | 830 | 543 | 334 | 249 | 300 | 347 | 313 | 408 | 386 | 332 |
| Telcom/ISP | 581 | 586 | 611 | 558 | 451 | 277 | 300 | 285 | 322 | 507 | 470 | 349 | 350 |
| Insurance | 1,215 | 1,147 | 1,552 | 1,306 | 936 | 633 | 476 | 637 | 659 | 795 | 1017 | 910 | 759 |
| Industrial Products/Heavy Machinery | 1,240 | 1,127 | 1,133 | 1,099 | 772 | 272 | 351 | 546 | 695 | 773 | 1041 | 967 | 835 |
| Pharma/Biotech/Clinical Research | 1,827 | 1,905 | 1,845 | 1,875 | 1448 | 1026 | 1125 | 1426 | 1316 | 1243 | 1794 | 1494 | 1477 |
| Hotels/Restaurants/Airlines/Travel | 2,218 | 2,060 | 2,185 | 2,087 | 1047 | 221 | 207 | 430 | 407 | 417 | 616 | 818 | 738 |
| FMCG/Foods/Beverage | 2,035 | 1,832 | 2,001 | 2,118 | 1446 | 654 | 700 | 1103 | 1209 | 1227 | 1754 | 1591 | 1404 |
| Chemicals/PetroChemical/Plastic/ | 1,200 | 1,116 | 1,252 | 1,366 | 964 | 574 | 487 | 815 | 939 | 937 | 1439 | 1246 | 1018 |
| Education/Teaching/Training | 4,562 | 3,945 | 4,630 | 4,608 | 3797 | 1785 | 1582 | 2711 | 2118 | 2312 | 3258 | 3234 | 2697 |
| IT-Hardware & Networking | 1,334 | 1,125 | 1,179 | 1,231 | 1052 | 557 | 558 | 764 | 835 | 829 | 1354 | 1055 | 949 |
| Retailing | 1,833 | 1,556 | 1,643 | 1,797 | 1135 | 399 | 308 | 545 | 532 | 813 | 935 | 1051 | 981 |
| Media/Dotcom/Entertainment | 1,201 | 1,027 | 1,109 | 1,050 | 698 | 299 | 438 | 420 | 572 | 589 | 816 | 758 | 637 |
| Medical/Healthcare/Hospital | 6,136 | 5,186 | 5,448 | 5,938 | 4706 | 2133 | 4060 | 4499 | 4612 | 5279 | 5091 | 4866 | 5044 |
| Real Estate/Property | 2,651 | 2,194 | 2,452 | 2,501 | 1640 | 420 | 594 | 947 | 1021 | 1364 | 1963 | 1983 | 1939 |

HIRING TRENDS ACROSS KEY FUNCTIONAL AREAS

- The demand for professionals in Banking/Insurance (-6%), IT Software (-17%) and Pharma/Biotech/Medical (-19%) roles is less impacted in November'20 Y-O-Y.
- Hiring for professionals in Legal (-35%), Marketing/Advertising (-36%) and Accounts/Finance (-38%) has seen a Y-O-Y decline.
- New jobs for professionals in Ticketing/Travel/Airlines, Hotel/Restaurant, and Teaching/Education roles witnessed a dip of 81%, 72% and 53% respectively.



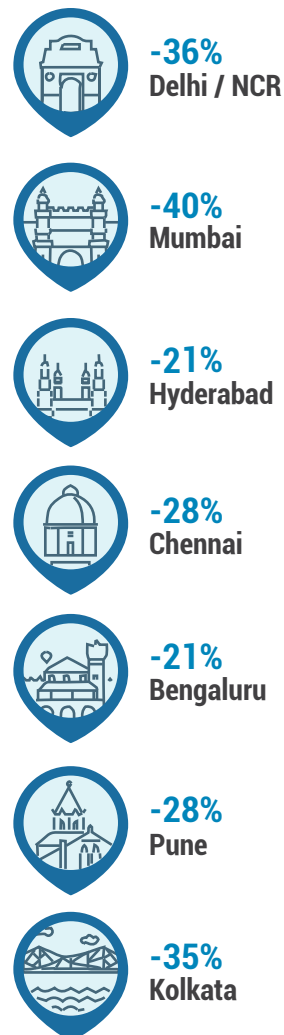
Figures are percentage change in Nov-20 over average of Nov-19

| Functional Area* | Nov-19 | Dec-19 | Jan-20 | Feb-20 | Mar-20 | Apr-20 | May-20 | Jun-20 | Jul-20 | Aug-20 | Sep-20 | Oct-20 | Nov-20 |
|--|--------|--------|--------|--------|--------|--------|--------|--------|--------|--------|--------|--------|--------|
| IT-Software | 3267 | 2803 | 3025 | 3145 | 2733 | 1642 | 1388 | 1674 | 1763 | 1969 | 2416 | 2462 | 2718 |
| Sales / BD | 2743 | 2556 | 2820 | 2890 | 2044 | 851 | 863 | 1147 | 1189 | 1280 | 1731 | 1837 | 1623 |
| ITES / BPO / KPO / Customer Service | 3263 | 2852 | 3051 | 3051 | 2907 | 1325 | 1153 | 1679 | 1673 | 1986 | 2452 | 2482 | 2220 |
| Production / Maintenance / Quality | 1400 | 1276 | 1372 | 1409 | 1090 | 359 | 486 | 785 | 831 | 909 | 1168 | 1038 | 866 |
| Accounts / Finance / Tax / CS / Audit | 1772 | 1515 | 1658 | 1742 | 1361 | 561 | 568 | 806 | 835 | 921 | 1169 | 1246 | 1104 |
| HR / Administration / IR | 2186 | 2018 | 2158 | 2206 | 1596 | 558 | 570 | 747 | 756 | 892 | 1260 | 1236 | 1292 |
| Site Engineering / Project Management | 722 | 633 | 713 | 649 | 457 | 186 | 206 | 291 | 364 | 385 | 463 | 467 | 444 |
| Marketing / Advertising / MR / PR | 1859 | 1697 | 1822 | 1656 | 1265 | 553 | 658 | 822 | 858 | 1030 | 1241 | 1241 | 1194 |
| Banking / Insurance | 1320 | 1278 | 1488 | 1258 | 1111 | 524 | 526 | 648 | 1027 | 1111 | 1404 | 1294 | 1239 |
| Engineering Design / R&D | 1004 | 832 | 973 | 960 | 701 | 398 | 381 | 507 | 606 | 548 | 708 | 718 | 635 |
| Hotels / Restaurants | 2759 | 2531 | 2541 | 2528 | 1407 | 300 | 272 | 697 | 534 | 538 | 659 | 841 | 762 |
| Pharma / Biotech / Healthcare / Medical | 6288 | 5412 | 5644 | 6137 | 4866 | 2442 | 3636 | 4953 | 5183 | 5968 | 5648 | 5079 | 5093 |
| Ticketing / Travel / Airlines | 4141 | 4234 | 5024 | 4588 | 1759 | 207 | 279 | 517 | 721 | 732 | 1203 | 1622 | 795 |
| IT- Hardware / Telecom / Technical Staff | 1751 | 1609 | 1491 | 1541 | 1340 | 677 | 665 | 906 | 1216 | 1228 | 1843 | 1503 | 1434 |

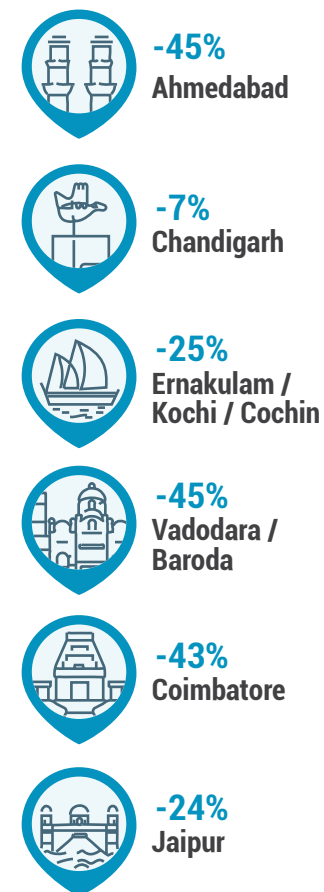
HIRING TRENDS ACROSS KEY CITIES

- Given the intensity of the pandemic in metros, the hiring activity in metros declined more than the national average (-30% vs -28%) in November'20 Y-O-Y.
- Mumbai (-40%), Delhi/NCR (-36%), and Kolkata (-35%), led the decline in hiring in metros.
- Chandigarh (-7%) was the least impacted in Tier-2 cities, while Ahmedabad and Vadodara were highly impacted, down by 45% each.

Metro Cities



Emerging Cities

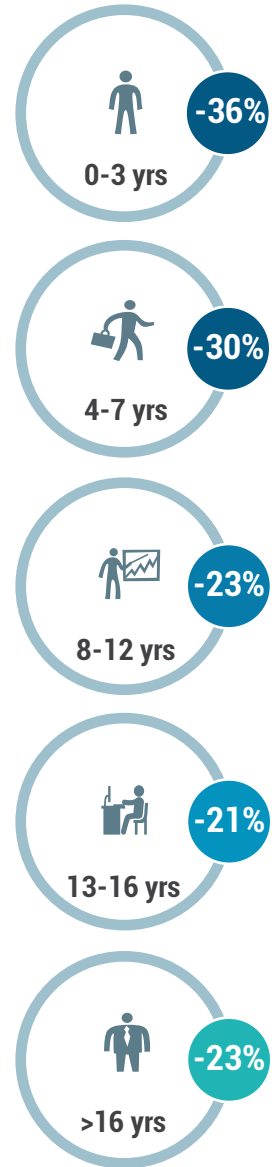


Figures are percentage change in Nov-20 over average of Nov-19

| City* | Nov-19 | Dec-19 | Jan-20 | Feb-20 | Mar-20 | Apr-20 | May-20 | Jun-20 | Jul-20 | Aug-20 | Sep-20 | Oct-20 | Nov-20 |
|----------------------------|--------|--------|--------|--------|--------|--------|--------|--------|--------|--------|--------|--------|--------|
| Delhi / NCR | 2567 | 2313 | 2360 | 2278 | 1818 | 804 | 820 | 1068 | 1170 | 1338 | 1598 | 1628 | 1643 |
| Mumbai | 1973 | 1740 | 1928 | 1936 | 1621 | 807 | 640 | 781 | 846 | 951 | 1175 | 1221 | 1192 |
| Bengaluru / Bangalore | 2563 | 2191 | 2455 | 2513 | 2256 | 1202 | 1060 | 1278 | 1228 | 1501 | 1709 | 1847 | 2025 |
| Chennai | 2008 | 1691 | 1748 | 1918 | 1494 | 742 | 698 | 854 | 892 | 1037 | 1291 | 1372 | 1442 |
| Hyderabad / Secunderabad | 2832 | 2561 | 2659 | 2785 | 2215 | 1156 | 1048 | 1382 | 1396 | 1597 | 1976 | 2026 | 2229 |
| Pune | 3109 | 2707 | 2895 | 3074 | 2589 | 1307 | 1026 | 1467 | 1417 | 1770 | 2226 | 2213 | 2230 |
| Kolkata | 3246 | 2799 | 2676 | 2849 | 2269 | 1075 | 856 | 1491 | 1431 | 1817 | 2178 | 2094 | 2122 |
| Ahmedabad | 3937 | 3493 | 3467 | 3545 | 2809 | 1311 | 1304 | 1700 | 1783 | 1936 | 2598 | 2436 | 2150 |
| Chandigarh | 2073 | 1740 | 2140 | 2112 | 1570 | 784 | 881 | 1329 | 1512 | 1636 | 2274 | 1852 | 1920 |
| Ernakulam / Kochi / Cochin | 4617 | 4160 | 4466 | 4809 | 2934 | 1325 | 1768 | 2591 | 2589 | 2768 | 3447 | 3769 | 3468 |
| Vadodara / Baroda | 3577 | 3603 | 2684 | 3014 | 2494 | 1051 | 1091 | 1348 | 1824 | 1769 | 2271 | 2063 | 1959 |
| Coimbatore | 3498 | 3144 | 3219 | 3137 | 2614 | 1025 | 1403 | 1640 | 1740 | 1550 | 1965 | 2058 | 1982 |
| Jaipur | 4017 | 3429 | 3823 | 3840 | 3091 | 1633 | 1553 | 2231 | 3124 | 2999 | 4090 | 2765 | 3035 |

HIRING TRENDS ACROSS EXPERIENCE LEVELS

- Hiring across experience levels remained impacted in November'20 as compared to November'19.
- The hiring for entry-level executives (0-3 yrs. exp.) and senior-level executives (4-7 yrs. exp.) saw a dip of 36% and 30% respectively.
- The middle management roles (8-12 yrs. exp.) declined by 23%, senior management roles (13-16 yrs. exp.) declined by 21% and leadership roles (16+ yrs. exp.) declined by 23%.



Figures are percentage change in Nov-20 over average of Nov-19



METHODOLOGY

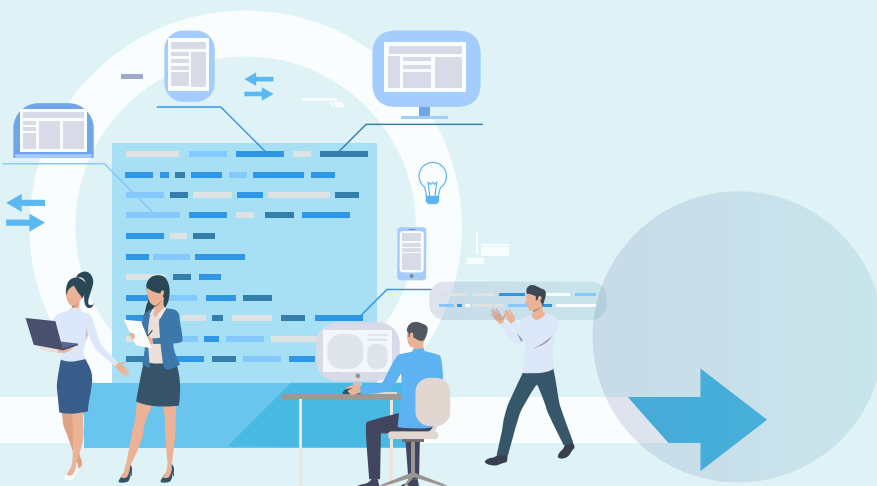
The Naukri JobSpeak is a monthly Index that calculates and records hiring activity based on the job listings on Naukri.com website month on month. The objective of Naukri JobSpeak is to measure the hiring activities in various industries, cities, functional areas and experience levels. The data is compiled from the website wherein jobs posted by clients on Naukri.com are considered. Thus, the job speak index includes jobs that might be for replacement hiring. July 2008 is taken to be the base with an index value of 1,000 and the subsequent monthly index is compared with the data for July 2008. The jobs analyzed for the monthly Index are qualified based on white-collar, urban, belonging to organized corporate sector jobs with the focus on service industries. The report shows hiring trends across industry sectors, geography, experience level, and functional areas. More than 76,000 clients use Naukri.com, leading to the high reliability of data. The report does not cover gig employment, hyperlocal hiring or campus placement. Over a long period, the Naukri JobSpeak was impacted by the increase in the Naukri traffic share, internet penetration, Naukri pricing strategy and job listing drives.

About Naukri.com

Naukri.com, India's No. 1 job site and the flagship brand of Info Edge introduced the concept of e-recruitment in India. Since its inception in 1997, Naukri.com has seen continuous growth while out-performing its competitors in every sphere. Info Edge was the first internet company to be listed in India. The brand enjoys a timeshare of over 96% across Desktop, Mobile and App as per similar web. Naukri.com is a recruitment platform that provides hiring-related services to corporates/recruiters, placement agencies and job seekers in India and overseas. It offers multiple products like Resume Database Access, listings and Response Management Tools. With more than 5,40,000 jobs live at any point and over 69 million CVs, Naukri.com services over 59,500 unique clients. The company operates 77 offices in 47 cities in India and overseas offices in Dubai, Riyadh, Abu Dhabi and Bahrain.

Disclaimer

The data is only representative of the listings on Naukri.com. Our analytics team has used statistical techniques to derive insights which might be useful for our users/stake holders/ audiences. There may be a statistical margin of error.



ANNEXURE

SECTORAL DATA

| Industry* | Nov-19 | Dec-19 | Jan-20 | Feb-20 | Mar-20 | Apr-20 | May-20 | Jun-20 | Jul-20 | Aug-20 | Sep-20 | Oct-20 | Nov20 |
|---|--------|--------|--------|--------|--------|--------|--------|--------|--------|--------|--------|--------|-------|
| IT-Software/Software Services | 3578 | 3133 | 3353 | 3525 | 3089 | 1803 | 1472 | 1755 | 1749 | 1986 | 2375 | 2533 | 2779 |
| BPO/ITES/CRM/Transcription | 2421 | 2120 | 2279 | 2259 | 2140 | 929 | 839 | 1244 | 1315 | 1527 | 1971 | 1878 | 1791 |
| Construction/Engineering/Cement/ Auto/Auto Ancillary | 973 | 862 | 952 | 906 | 633 | 216 | 282 | 374 | 475 | 490 | 583 | 583 | 555 |
| Banking/Financial Services/Broking | 2848 | 2701 | 3062 | 2946 | 2465 | 993 | 858 | 1192 | 1378 | 1437 | 1910 | 1832 | 1772 |
| Oil and Gas/Power/Infrastructure | 774 | 712 | 820 | 830 | 543 | 334 | 249 | 300 | 347 | 313 | 408 | 386 | 332 |
| Telcom/ISP | 581 | 586 | 611 | 558 | 451 | 277 | 300 | 285 | 322 | 507 | 470 | 349 | 350 |
| Insurance | 1215 | 1147 | 1552 | 1306 | 936 | 633 | 476 | 637 | 659 | 795 | 1017 | 910 | 759 |
| Industrial Products/Heavy Machinery | 1240 | 1127 | 1133 | 1099 | 772 | 272 | 351 | 546 | 695 | 773 | 1041 | 967 | 835 |
| Pharma/Biotech/Clinical Research | 1827 | 1905 | 1845 | 1875 | 1448 | 1026 | 1125 | 1426 | 1316 | 1243 | 1794 | 1494 | 1477 |
| Hotels/Restaurants/Airlines/Travel | 2218 | 2060 | 2185 | 2087 | 1047 | 221 | 207 | 430 | 407 | 417 | 616 | 818 | 738 |
| FMCG/Foods/Beverage | 2035 | 1832 | 2001 | 2118 | 1446 | 654 | 700 | 1103 | 1209 | 1227 | 1754 | 1591 | 1404 |
| Chemicals/PetroChemical/Plastic/ Education/Teaching/Training | 1200 | 1116 | 1252 | 1366 | 964 | 574 | 487 | 815 | 939 | 937 | 1439 | 1246 | 1018 |
| IT-Hardware & Networking | 1334 | 1125 | 1179 | 1231 | 1052 | 557 | 558 | 764 | 835 | 829 | 1354 | 1055 | 949 |
| Retailing | 1833 | 1556 | 1643 | 1797 | 1135 | 399 | 308 | 545 | 532 | 813 | 935 | 1051 | 981 |
| Media/Dotcom/Entertainment | 1201 | 1027 | 1109 | 1050 | 698 | 299 | 438 | 420 | 572 | 589 | 816 | 758 | 637 |
| Medical/Healthcare/Hospital | 6136 | 5186 | 5448 | 5938 | 4706 | 2133 | 4060 | 4499 | 4612 | 5279 | 5091 | 4866 | 5044 |
| Real Estate/Property | 2651 | 2194 | 2452 | 2501 | 1640 | 420 | 594 | 947 | 1021 | 1364 | 1963 | 1983 | 1939 |
| Recruitment/Employment Firm | 3487 | 3135 | 3758 | 3638 | 2856 | 904 | 833 | 1303 | 1782 | 2127 | 3122 | 2798 | 2683 |
| Consumer Durables | 1314 | 1250 | 1241 | 1111 | 928 | 288 | 352 | 595 | 671 | 641 | 808 | 842 | 777 |
| Accounting/Taxation/Finance | 3989 | 3348 | 3434 | 3398 | 2792 | 1082 | 1092 | 1668 | 1834 | 2036 | 2510 | 2480 | 2357 |
| Advertising/PR/MR/Events | 4072 | 3813 | 3662 | 3416 | 2552 | 880 | 1036 | 1366 | 1481 | 1707 | 1979 | 2256 | 2039 |
| Textiles/Garments/Accessories | 2,285 | 1,999 | 1,910 | 1,986 | 1264 | 359 | 583 | 967 | 1093 | 1236 | 1336 | 1488 | 1508 |
| Semiconductors/Electronics | 1,670 | 1,410 | 1,553 | 1,483 | 1061 | 650 | 855 | 865 | 1012 | 1245 | 1128 | 1441 | 1278 |
| Courier/Transportation/Freight | 1,967 | 1,721 | 1,953 | 1,913 | 1493 | 565 | 647 | 1036 | 1395 | 1505 | 1954 | 1652 | 1601 |
| Architecture/Interior Designing | 2,259 | 1,801 | 2,133 | 1,724 | 1076 | 309 | 606 | 818 | 750 | 1151 | 1452 | 1508 | 1384 |
| Export/Import | 1,551 | 1,280 | 1,283 | 1,411 | 1274 | 385 | 410 | 663 | 1183 | 796 | 1086 | 1226 | 1175 |
| Printing/Packaging | 1,763 | 1,245 | 1,530 | 1,786 | 1271 | 367 | 538 | 781 | 925 | 1021 | 1134 | 1082 | 943 |
| Shipping/Marine | 682 | 857 | 779 | 817 | 646 | 157 | 245 | 387 | 360 | 512 | 874 | 920 | 633 |
| Agriculture/Dairy | 2,039 | 1,791 | 2,211 | 1,825 | 1609 | 834 | 891 | 1537 | 1931 | 1819 | 2333 | 2243 | 1793 |
| Office Equipment/Automation | 1,058 | 1,123 | 1,454 | 1,364 | 801 | 204 | 262 | 353 | 406 | 411 | 624 | 524 | 480 |
| Fresher/Trainee | 2,193 | 2,159 | 1,937 | 1,983 | 1618 | 329 | 416 | 1005 | 1113 | 1365 | 2040 | 1818 | 1587 |
| NGO/Social Services | 2,779 | 1,980 | 2,484 | 2,291 | 2172 | 748 | 838 | 1217 | 1320 | 1242 | 1870 | 1987 | 1679 |
| Gems & Jewellery | 4,477 | 3,679 | 4,847 | 3,973 | 3139 | 883 | 954 | 1700 | 1934 | 2612 | 3750 | 4144 | 3426 |
| Paper | 674 | 703 | 703 | 712 | 615 | 234 | 402 | 649 | 578 | 465 | 519 | 377 | 493 |
| Legal | 4,431 | 3,695 | 3,606 | 4,252 | 2716 | 1257 | 1083 | 2039 | 2241 | 1811 | 2407 | 2226 | 2116 |
| Tyres | 1,089 | 905 | 920 | 1,079 | 787 | 153 | 178 | 475 | 519 | 371 | 552 | 460 | 567 |
| Fertilizers/Pesticides | 1,932 | 2,033 | 1,989 | 1,713 | 1440 | 874 | 846 | 1380 | 1751 | 1781 | 1748 | 1855 | 1901 |
| Security/Law Enforcement | 3,749 | 3,319 | 3,392 | 3,374 | 2376 | 225 | 707 | 1669 | 1796 | 1886 | 1968 | 2322 | 1500 |
| Defence/Government | 2,675 | 2,215 | 2,192 | 1,397 | 1516 | 723 | 1562 | 2770 | 3172 | 2239 | 2603 | 2845 | 1856 |

ANNEXURE FUNCTIONAL AREA

| Functional* | Nov-19 | Dec-19 | Jan-20 | Feb-20 | Mar-20 | Apr-20 | May-20 | Jun-20 | Jul-20 | Aug-20 | Sep-20 | Oct-20 | Nov-20 |
|---------------------------------------|--------|--------|--------|--------|--------|--------|--------|--------|--------|--------|--------|--------|--------|
| IT-Software | 3267 | 2803 | 3025 | 3145 | 2733 | 1642 | 1388 | 1674 | 1763 | 1969 | 2416 | 2462 | 2718 |
| Sales / BD | 2743 | 2556 | 2820 | 2890 | 2044 | 851 | 863 | 1147 | 1189 | 1280 | 1731 | 1837 | 1623 |
| ITES / BPO / KPO / Customer Service | 3263 | 2852 | 3051 | 3051 | 2907 | 1325 | 1153 | 1679 | 1673 | 1986 | 2452 | 2482 | 2220 |
| Production / Maintenance / Quality | 1400 | 1276 | 1372 | 1409 | 1090 | 359 | 486 | 785 | 831 | 909 | 1168 | 1038 | 866 |
| Accounts / Finance / Tax / CS / Audit | 1772 | 1515 | 1658 | 1742 | 1361 | 561 | 568 | 806 | 835 | 921 | 1169 | 1246 | 1104 |
| HR / Administration / IR | 2186 | 2018 | 2158 | 2206 | 1596 | 558 | 570 | 747 | 756 | 892 | 1260 | 1236 | 1292 |
| Site Engineering / Project Management | 722 | 633 | 713 | 649 | 457 | 186 | 206 | 291 | 364 | 385 | 463 | 467 | 444 |
| Marketing / Advertising / MR / PR | 1859 | 1697 | 1822 | 1656 | 1265 | 553 | 658 | 822 | 858 | 1030 | 1241 | 1241 | 1194 |
| Banking / Insurance | 1320 | 1278 | 1488 | 1258 | 1111 | 524 | 526 | 648 | 1027 | 1111 | 1404 | 1294 | 1239 |
| Engineering Design / R&D | 1004 | 832 | 973 | 960 | 701 | 398 | 381 | 507 | 606 | 548 | 708 | 718 | 635 |
| Purchase / Logistics / Supply Chain | 1295 | 1152 | 1196 | 1127 | 920 | 407 | 475 | 695 | 809 | 937 | 1160 | 1095 | 959 |
| Secretary / Front Office / Data Entry | 1408 | 1155 | 1062 | 1137 | 813 | 169 | 263 | 435 | 505 | 536 | 773 | 716 | 683 |
| IT- Hardware / Telecom / Technical | 1751 | 1609 | 1491 | 1541 | 1340 | 677 | 665 | 906 | 1216 | 1228 | 1843 | 1503 | 1434 |
| Teaching / Education | 4340 | 3720 | 4589 | 4270 | 3924 | 1686 | 1402 | 2093 | 1802 | 2060 | 2683 | 2160 | 2027 |
| Pharma / Biotech / Healthcare | 6288 | 5412 | 5644 | 6137 | 4866 | 2442 | 3636 | 4953 | 5183 | 5968 | 5648 | 5079 | 5093 |
| Hotels / Restaurants | 2759 | 2531 | 2541 | 2528 | 1407 | 300 | 272 | 697 | 534 | 538 | 659 | 841 | 762 |
| Top Management | 902 | 822 | 828 | 681 | 628 | 512 | 476 | 596 | 536 | 581 | 729 | 575 | 942 |
| Architecture / Interior Design | 1352 | 1239 | 1618 | 1191 | 864 | 452 | 531 | 638 | 687 | 778 | 985 | 979 | 913 |
| Export / Import / Merchandising | 1296 | 1155 | 1258 | 1205 | 986 | 316 | 414 | 762 | 895 | 1209 | 1000 | 1167 | 1053 |
| Corporate Planning / Consulting | 1684 | 1445 | 1460 | 1438 | 1097 | 619 | 623 | 840 | 783 | 1010 | 1265 | 1342 | 1134 |
| Legal | 1833 | 1865 | 1840 | 2007 | 1438 | 652 | 644 | 918 | 917 | 970 | 1265 | 1177 | 1190 |
| Web / Graphic Design / Visualiser | 4275 | 3513 | 3795 | 3960 | 2857 | 1226 | 1749 | 2066 | 2373 | 3080 | 3241 | 3780 | 3471 |
| Content / Journalism | 3418 | 3207 | 3358 | 3423 | 2763 | 1237 | 1481 | 1936 | 1726 | 2188 | 2394 | 2604 | 2438 |
| Ticketing / Travel / Airlines | 4141 | 4234 | 5024 | 4588 | 1759 | 207 | 279 | 517 | 721 | 732 | 1203 | 1622 | 795 |
| Fashion / Garments / Merchandising | 1585 | 1288 | 1399 | 1465 | 764 | 199 | 152 | 410 | 402 | 641 | 898 | 968 | 952 |
| Guards / Security Services | 2066 | 1765 | 1796 | 1461 | 1051 | 316 | 531 | 1065 | 857 | 949 | 1339 | 1122 | 833 |
| TV / Films / Production | 1569 | 1926 | 2302 | 1536 | 1126 | 674 | 816 | 1097 | 1567 | 865 | 1148 | 1339 | 1097 |
| Packaging | 1593 | 1306 | 1651 | 1649 | 1215 | 1462 | 889 | 1068 | 1161 | 1106 | 1462 | 1179 | 1143 |

ANNEXURE CITES

| Cities* | Nov-19 | Dec-19 | Jan-20 | Feb-20 | Mar-20 | Apr-20 | May-20 | Jun-20 | Jul-20 | Aug-20 | Sep-20 | Oct-20 | Nov-20 |
|----------------------------|--------|--------|--------|--------|--------|--------|--------|--------|--------|--------|--------|--------|--------|
| Delhi / NCR | 2567 | 2313 | 2360 | 2278 | 1818 | 804 | 820 | 1068 | 1170 | 1338 | 1598 | 1628 | 1643 |
| Mumbai | 1973 | 1740 | 1928 | 1936 | 1621 | 807 | 640 | 781 | 846 | 951 | 1175 | 1221 | 1192 |
| Bengaluru / Bangalore | 2563 | 2191 | 2455 | 2513 | 2256 | 1202 | 1060 | 1278 | 1228 | 1501 | 1709 | 1847 | 2025 |
| Chennai | 2008 | 1691 | 1748 | 1918 | 1494 | 742 | 698 | 854 | 892 | 1037 | 1291 | 1372 | 1442 |
| Hyderabad / Secunderabad | 2832 | 2561 | 2659 | 2785 | 2215 | 1156 | 1048 | 1382 | 1396 | 1597 | 1976 | 2026 | 2229 |
| Pune | 3109 | 2707 | 2895 | 3074 | 2589 | 1307 | 1026 | 1467 | 1417 | 1770 | 2226 | 2213 | 2230 |
| Kolkata | 3246 | 2799 | 2676 | 2849 | 2269 | 1075 | 856 | 1491 | 1431 | 1817 | 2178 | 2094 | 2122 |
| Ahmedabad | 3937 | 3493 | 3467 | 3545 | 2809 | 1311 | 1304 | 1700 | 1783 | 1936 | 2598 | 2436 | 2150 |
| Chandigarh | 2073 | 1740 | 2140 | 2112 | 1570 | 784 | 881 | 1329 | 1512 | 1636 | 2274 | 1852 | 1920 |
| Ernakulam / Kochi / Cochin | 4617 | 4160 | 4466 | 4809 | 2934 | 1325 | 1768 | 2591 | 2589 | 2768 | 3447 | 3769 | 3468 |
| Vadodara / Baroda | 3577 | 3603 | 2684 | 3014 | 2494 | 1051 | 1091 | 1348 | 1824 | 1769 | 2271 | 2063 | 1959 |
| Coimbatore | 3498 | 3144 | 3219 | 3137 | 2614 | 1025 | 1403 | 1640 | 1740 | 1550 | 1965 | 2058 | 1982 |
| Jaipur | 4017 | 3429 | 3823 | 3840 | 3091 | 1633 | 1553 | 2231 | 3124 | 2999 | 4090 | 2765 | 3035 |