

NAUKRI JOBSPEAK REPORT

Hiring Trends By City, Industry,
& Experience



2022

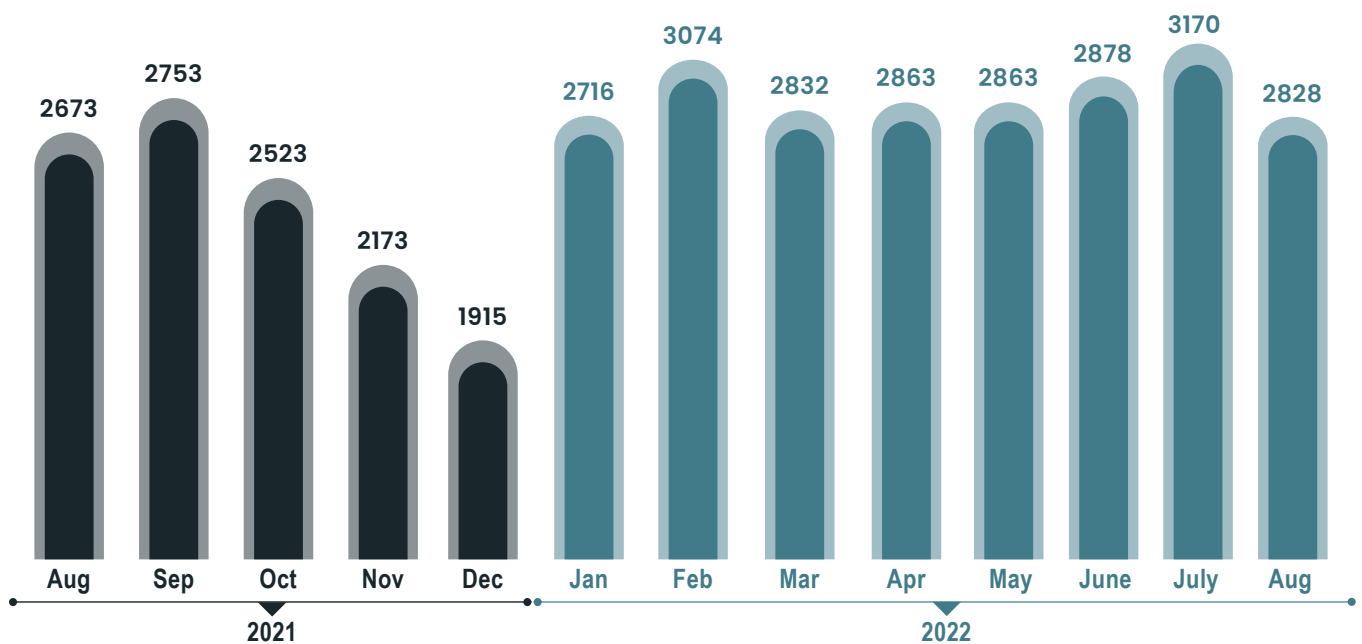
Aug



INDEX FOR AUGUST 2022

Insurance sector drives hiring activity in India; up by +87%: Naukri JobSpeak

OVER ALL HIRING TRENDS



- Hiring activity in India remained stable with 6% YOY growth in Aug'22 as indicated by Naukri JobSpeak Index that stood at 2828.
- The growth in hiring was driven by the Insurance sector that grew by +87% in Aug'22 vs last year.
- Emerging cities stayed ahead in hiring with double-digit growth. Coimbatore led the charts at +28% YOY growth.
- Demand for professionals across all experience bands remained positive in Aug'22.

Pawan Goyal,

Chief Business Officer,
Naukri.com

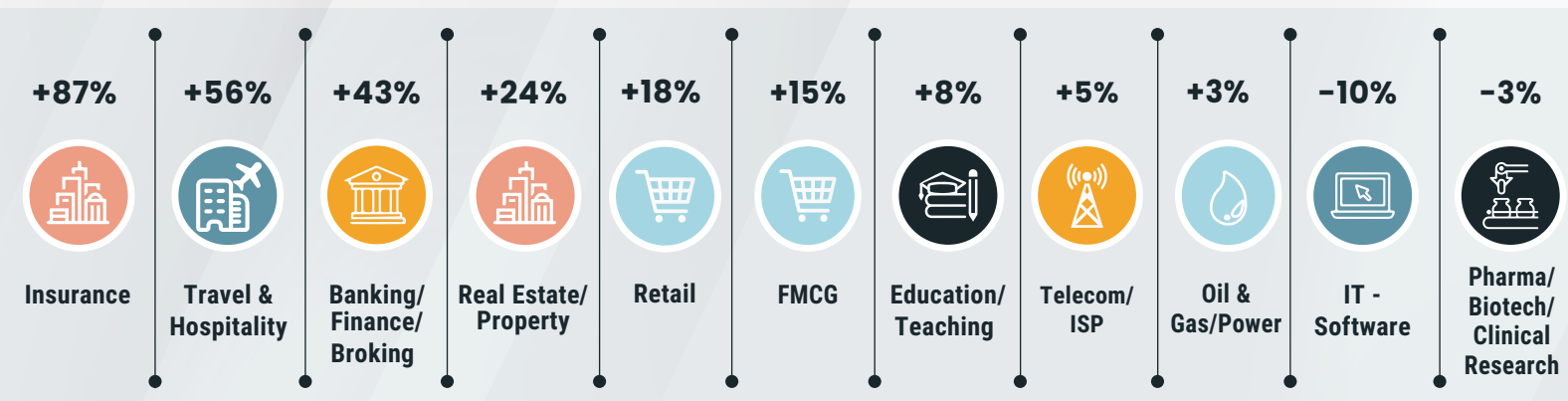
“After witnessing an extravagant growth rate in the last 2-3 months, hiring activity is seeing signs of stabilization, and it would be interesting to see how the trend continues in the coming months. Important to note that Insurance as a sector has been flourishing since the start of this year as there has been continuous growth in hiring which is creating opportunities across experience bands with over 100% YOY growth in 0-7 years' experience band.”





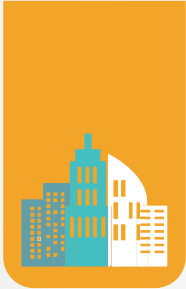
HIRING TRENDS ACROSS INDUSTRIES

- The Insurance sector continued to grow in hiring over last year for the seventh time in a row and recorded a steep Y-O-Y jump of +87% in Aug'22. Within the sector, maximum traction was seen for 4-7 years' experience band (+103%) followed by 0-3 years (+99%), and 8-12 years (+42%).
- Looking at cities, the sector showed a significant jump in hiring activity in NCR (+136%) and Mumbai (+129%) in Aug'22 vs last year.
- Apart from the insurance sector, there has been a positive intent to hire in other sectors, including Travel and Hospitality (+56%), BFSI (+43%), Auto/Auto Ancillary (+29%), Real Estate (+24%), and Retail (+18%) in Aug'22 vs Aug'21.
- While Pharma/Biotech remained flat, the IT/Software sector recorded a degrowth of (-10%) Y-O-Y in Aug'22 vs Aug'21.



Figures are percentage change in Aug-22 over average of Aug-21

Industry*	Aug-21	Sep-21	Oct-21	Nov-21	Dec-21	Jan-22	Feb-22	Mar-22	Apr-22	May-22	June-22	July-22	Aug-22	YOY-Growth
IT-Software/Software Services	5422	5648	4686	4155	3334	5370	5560	4983	4656	4711	5069	5872	4881	↓ -10%
BPO/ITES/CRM/Transcription	1994	2229	2044	1771	1567	1987	2468	2458	2659	2617	2600	2587	2325	↑ 17%
Auto/Auto Ancillary	1051	978	896	787	733	925	1160	1038	1146	1152	1106	1183	1360	↑ 29%
Banking/Financial Services/Broking	2496	2736	2549	2305	2145	2860	3433	3138	3348	3299	3279	3731	3576	↑ 43%
Oil and Gas/Power/Infrastructure/Energy	535	422	372	378	338	423	510	449	522	517	491	581	550	↑ 3%
Telecom/ISP	630	645	642	670	374	602	621	563	607	669	622	741	664	↑ 5%
Insurance	1176	1308	1234	822	829	1291	2042	1541	1553	1946	1761	2124	2200	↑ 87%
Pharma/Biotech/Clinical Research	1937	1988	1836	1654	1747	2169	2429	2117	2108	2078	1908	2081	1871	↓ -3%
Travel & Hospitality	977	1124	1207	1170	1007	1014	1432	1698	1609	1603	1468	1487	1526	↑ 56%
FMCG/Foods/Beverage	1719	1820	1625	1492	1491	1737	2024	1842	1996	1960	1976	2203	1971	↑ 15%
Education/Teaching/Training	4677	4993	4548	4143	3674	4755	5868	5753	6321	6030	5484	5311	5040	↑ 8%
IT-Hardware & Networking	856	1038	888	848	725	1006	1181	1338	1027	1045	757	923	856	↑ 0%
Retail	1370	1587	1587	1441	1300	1758	2004	1795	1992	2055	2042	1865	1621	↑ 18%
Medical/Healthcare/Hospital	5778	6433	6170	5192	3989	5260	6589	6248	6323	6403	5983	6402	6546	↑ 13%

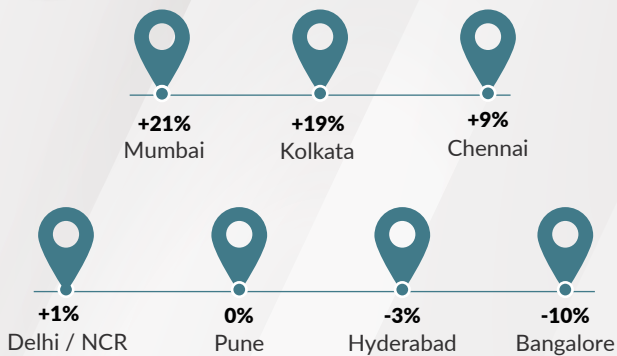


HIRING TRENDS ACROSS CITIES

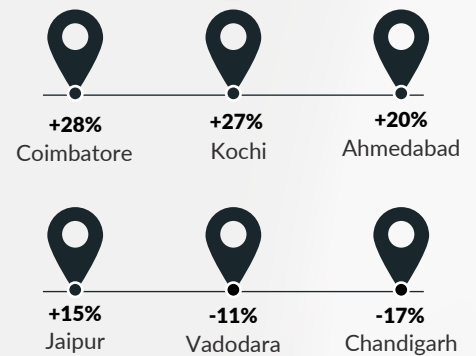
- Amongst tier-II cities, Coimbatore led the charts at +28% YOY growth, followed by Kochi at +27%.
- Barring Chandigarh (-17%) and Vadodara (-11%), other emerging cities recorded a double-digit growth in hiring activity in Aug'22 vs last year.
- Ahmedabad and Jaipur maintained their momentum with (+20%) and (+15%) YOY growth respectively.
- Amongst metros, Mumbai led the charts at +21% growth in Aug'22 vs Aug'21, whereas Delhi/NCR, Hyderabad, and Pune remained flat. Bangalore showed a dip of (-10%) in Aug'22.



METRO CITIES



Emerging Cities



Figures are percentage change in Aug-22 over average of Aug-21

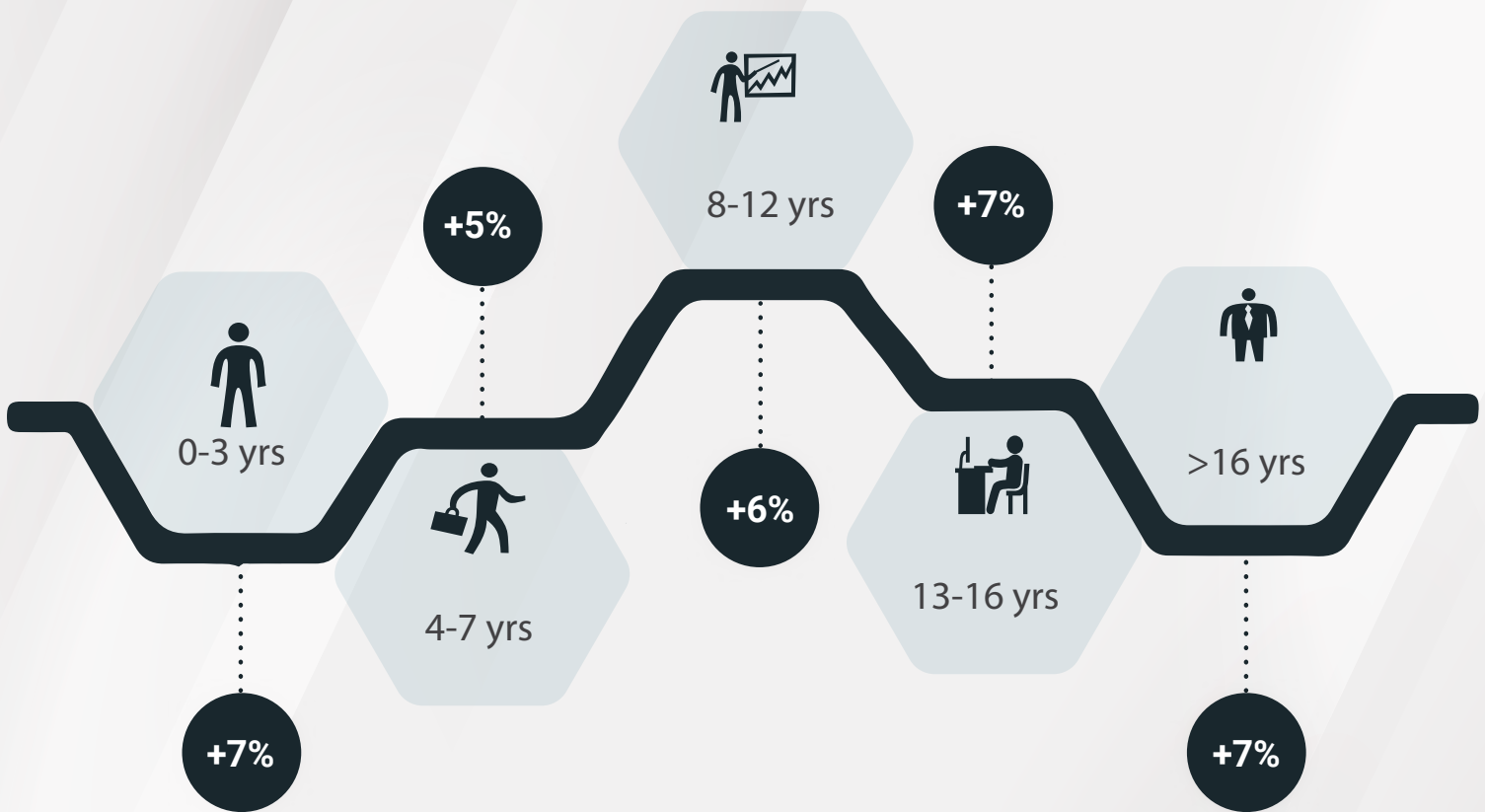
City*	Aug-21	Sep-21	Oct-21	Nov-21	Dec-22	Jan-22	Feb-22	Mar-22	Apr-22	May-22	Jun-22	Jul-22	Aug-22	YOY-Growth
Delhi / NCR	2570	2753	2452	2194	1885	2530	2932	1977	2811	2782	2792	3038	2605	↑ 1%
Mumbai	1783	1875	1787	1619	1413	1989	2182	2029	2100	2188	2219	2338	2150	↑ 21%
Bengaluru / Bangalore	3791	3979	3398	3027	2394	3767	4085	3701	3532	3484	3722	4076	3420	↓ -10%
Chennai	2307	2394	2158	1943	1662	2336	2659	2414	2364	2394	2432	2745	2519	↑ 9%
Hyderabad / Secunderabad	3946	4146	3638	3283	2725	3908	4329	4118	4097	3967	3907	4578	3812	↓ -3%
Pune	4079	4333	3742	3285	2740	4154	4430	4012	4025	4114	4143	5035	4073	↑ 0%
Kolkata	3176	3479	2639	2608	2360	3299	4071	3573	3486	3750	3760	4317	3773	↑ 19%
Ahmedabad	4255	4729	4201	3461	3115	3997	4614	4041	4235	4438	4598	5344	5110	↑ 20%
Chandigarh	2377	2394	2158	1836	1657	2162	2240	2053	2245	2294	2077	2014	1962	↓ -17%
Ernakulam / Kochi / Cochin	3729	4086	4013	3412	2845	4534	4422	4286	4527	4596	5478	5128	4748	↑ 27%
Vadodara / Baroda	2808	3012	2411	2113	1984	2425	2524	2516	2798	2872	2702	2881	2512	↓ -11%
Coimbatore	2932	2869	2811	2528	2145	2961	3699	3241	3365	3216	3466	4542	3748	↑ 28%
Jaipur	4033	4026	3615	3241	3074	3985	4461	3831	4435	4206	4272	4282	4632	↑ 15%

HIRING TRENDS

ACROSS EXPERIENCE LEVELS



- Hiring activity showed single-digit jump across all experience brackets such as 0-3 years (+7%), 4-7 years (+5%), and 8-12 years (+6%), 13-16 years (+7%), and >16 years (+7%) when compared with Aug'21.



Aug'22 vis-a-vis Aug'21

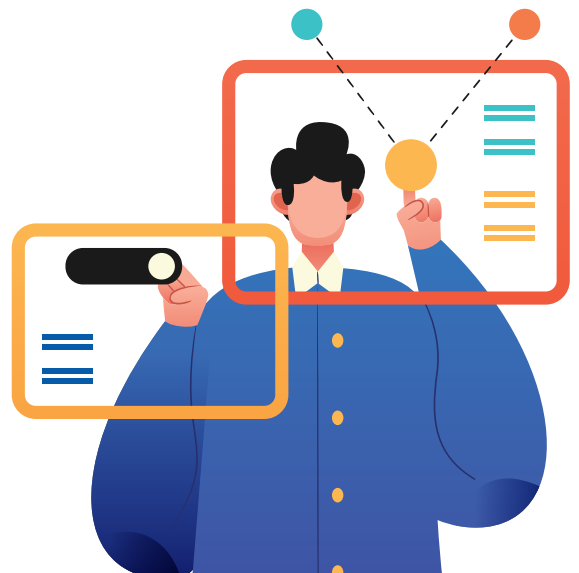


METHODOLOGY:

The Naukri JobSpeak is a monthly Index that calculates and records hiring activity based on the job listings on Naukri.com website month on month. The objective of Naukri JobSpeak is to measure the hiring activity in various industries, cities, and experience levels. The data is compiled from the website wherein jobs posted by clients on Naukri.com are considered. July 2008 is taken as the base with an index value of 1,000 and the subsequent monthly index is compared with the data for July 2008. The report shows hiring trends across industry sectors, geography, and experience level. More than 76,000 clients use Naukri.com, leading to the high reliability of data. The report does not cover gig employment, hyperlocal hiring or campus placement. Data on functional area hiring has been retired due to changes in the taxonomy. Over a long period of time, Naukri JobSpeak could be impacted by factors like internet penetration, Naukri market share, Naukri pricing and job listing drives.

ABOUT NAUKRI.COM

Naukri.com, India's No. 1 job site and the flagship brand of Info Edge introduced the concept of e-recruitment in India. Since its inception in 1997, Naukri.com has seen continuous growth while outperforming its competitors in every sphere. Info Edge was the first internet company to be listed in India. Being the market leader, the brand enjoys highest levels of awareness and market share amongst jobseekers and recruiters for more than a decade and has become synonymous with the jobs category. The brand leads with over 96% timeshare across Desktop, Mobile and App. The platform provides hiring-related services to corporates/recruiters, placement agencies and job seekers in India and overseas. It offers multiple products like Resume Database Access, listings, Branding and Response Management Tools. With more than 5,00,000 jobs at any point in time and over 80 million profiles, the brand services over 84,000 unique clients through its 64 offices in 45 cities in India.



ANNEXURE SECTORAL DATA													
Industry*	Q3 2022 Performance Metrics (Values in Lakhs)												
	Aug-21	Sep-21	Oct-21	Nov-21	Dec-21	Jan-22	Feb-22	Mar-22	Apr-22	May-22	Jun-22	Jul-22	Aug-22
IT-Software/Software Services	5422	5648	4686	4155	3334	5370	5560	4983	4656	4711	5069	5872	-10%
BPO/ITES/CRM/Transcription	1994	2229	2044	1771	1567	1987	2468	2458	2659	2617	2600	2587	17%
Construction/Engineering/Cement/Metals	692	781	726	612	597	738	889	828	899	872	840	875	15%
Auto/Auto Ancillary	1051	978	896	787	733	925	1160	1038	1146	1152	1106	1183	29%
Banking/Financial Services/Broking	2496	2736	2549	2305	2145	2860	3433	3138	3348	3299	3279	3731	43%
Oil and Gas/Power/Infrastructure/Energy	535	422	372	378	338	423	510	449	522	517	491	581	3%
Telecom/ISP	630	645	642	670	374	602	621	563	607	669	622	741	5%
Insurance	1176	1308	1234	822	892	1291	2042	1541	1553	1946	1761	2124	87%
Industrial Products/Heavy Machinery	1095	1168	1106	1032	911	1153	1349	1345	1504	1440	1431	1454	21%
Pharma/Biotech/Clinical Research	1937	1988	1836	1654	1747	2169	2429	2117	2108	2078	1908	2081	-3%
Travel & Hospitality	977	1124	1207	1170	1007	1014	1432	1698	1609	1603	1468	1487	56%
FMCG/Foods/Beverage	1719	1820	1625	1492	1491	1737	2024	1842	1996	1960	1976	2203	15%
Chemicals/PetroChemical/Plastic/Rubber	1110	1205	1228	1096	1042	1242	1537	1453	1528	1775	1580	1621	25%
Education/Teaching/Training	4677	4993	4548	4143	3674	4755	5868	5753	6321	6030	5484	5311	8%
IT-Hardware & Networking	856	1038	888	848	725	1006	1181	1338	1027	1045	757	923	0%
Retail	1370	1587	1587	1441	1300	1758	2004	1795	1992	2055	2042	1865	18%
Media/Dotcom/Entertainment	235	262	281	259	196	223	307	291	337	378	370	387	53%
Medical/Healthcare/Hospital	5778	6433	6170	5192	3989	5260	6589	6248	6323	6403	5983	6402	13%
Real Estate/Property	2723	2723	2616	2249	2238	2816	3302	3171	3316	3180	3083	3261	24%
Recruitment/Employment Firm	4398	4613	4512	3953	3249	3988	5253	4895	5160	4339	4021	4140	-15%
Consumer Durables	779	869	892	717	649	833	964	788	918	891	896	797	3%
Accounting/Taxation/Finance	2201	2494	2322	2007	1834	2285	3216	2844	3124	3746	3608	5353	84%
Advertising/PR/MR/Events	2851	3061	3068	3060	2643	3480	3884	4068	4469	4143	4293	4270	50%
Textiles/Garments/Accessories	1995	2164	1834	1956	1640	2096	2403	2299	2504	2671	2200	2221	1%
Semiconductors/Electronics	3526	3797	3999	3441	3010	3710	4879	4695	5669	5040	6203	5760	21%
Courier/Transportation/Freight	2059	2386	2391	2171	1953	2506	2826	2684	2818	3030	2712	2667	29%
Architecture/Interior Designing	1707	2078	1807	1675	1345	1826	2490	2368	2565	2523	2269	2296	36%
Export/Import	1372	1447	1143	1199	908	1412	1461	1409	1612	1555	1486	1406	-14%
Printing/Packaging	1018	1191	890	900	771	960	1223	1053	1188	1168	1091	1002	20%
Shipping/Marine	764	790	705	817	738	835	991	872	953	935	961	1143	24%
Agriculture/Dairy	1688	1981	1702	1571	1208	1660	2276	1782	2006	1968	1768	1530	-10%
Office Equipment/Automation	1514	1615	1553	1441	1321	1682	2201	1999	2434	2211	2528	2488	44%
Fresher/Trainee	67	53	52	16	52	141	297	134	104	74	74	22	-22%
NGO/Social Services	2754	3073	2896	2618	2378	3393	2839	2761	2733	3052	2832	3272	28%
Gems & Jewellery	4320	4983	4232	4386	3830	3956	4609	4609	5462	5488	4784	4709	27%
Paper	402	623	490	416	427	490	615	414	565	590	553	640	50%
Legal	3710	5092	3873	3956	2968	4096	5892	4972	5387	5179	5031	6693	56%
Fertilizers/Pesticides	4155	4431	4170	3436	3042	4051	5016	4126	4185	4230	4972	6604	13%
Security/Law Enforcement	2031	1761	1505	2137	1252	1723	1905	1832	2811	2140	2684	1977	16%
Defence/Government	2985	3736	3218	2530	2355	4128	5387	4874	5504	5900	5247	4991	74%